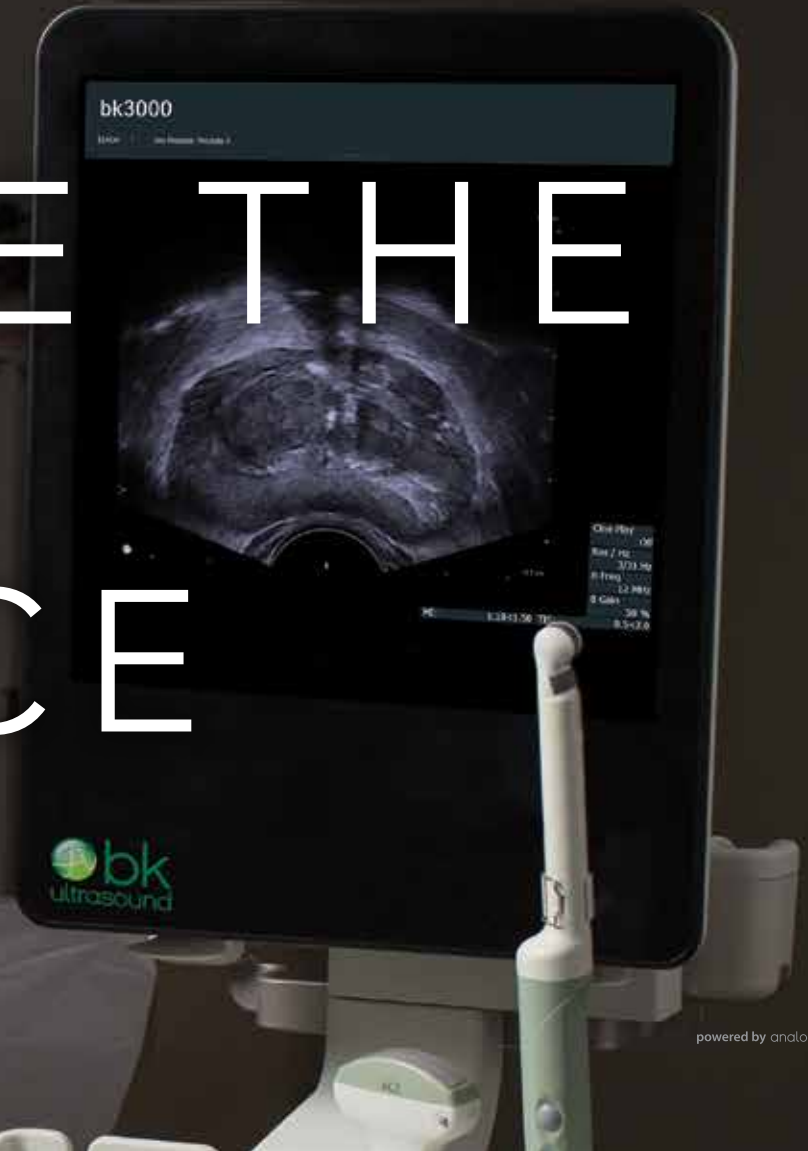


SEE DETAILS

THAT MAKE THE

bk3000 UROLOGY

DIFFERENCE



powered by analogic

DESIGNED WITH A FOCUS ON UROLOGY

The bk3000 has been developed to help you, the urologist, find and accurately target suspicious lesions.

No-Touch Auto Gain automatically renders superb anatomical imaging detail without the need for manual adjustment.

Sensitive **color Doppler** provides excellent real-time visualization of vascular perfusion, and advanced modes, including **Elastography** and **Contrast Imaging**, help you quickly identify regions of interest and reduce the need to refer your patient for additional imaging.

SUPERB VISUALIZATION

The system is designed to deliver superb images with high spatial, temporal, and contrast resolution, allowing you to quickly identify lesions and perform targeted biopsies.

FITS YOUR WORKFLOW AND YOUR WORKSPACE

A sleek, mobile, and stable system that fits well in a variety of clinical settings. The 20-second boot time means the system is ready when you need it, and the optional battery provides up to two hours of plug-free imaging.

PRECISION IN TARGETING

Our unique triplane transducer improves precision in targeted biopsies. Its simultaneous biplane and endfire imaging capabilities allow you to interrogate the prostate from apex to bladder neck, and target all regions of the prostate with greater confidence.

bkFusion - PROVIDING CLEAR ANSWERS FROM PROSTATE BIOPSIES

bkFusion enhances your clinical procedure and accuracy with true, real-time MRI-to-ultrasound fusion during prostate biopsy. Integrating the bk3000 with the best MRI fusion software provides unmatched image quality and an intuitive fusion workflow. The bk3000 also works with the leading MRI/ultrasound fusion systems.

GUIDING THERAPY

The bk3000 is the market-leading solution for ultrasound-guided treatments like brachytherapy.

The system can be upgraded for robotic-assisted partial nephrectomy procedures with our Drop-In transducer.

ADVANCED, SPECIALIZED AND STERILIZABLE TRANSDUCERS

A comprehensive solution for the full spectrum of ultrasound-guided procedures.

DEDICATED UROLOGY CONFIGURATIONS

Enable you to work faster and more efficiently.



REAL CLINICAL IMPACT WITH HIGH-RESOLUTION IMAGING



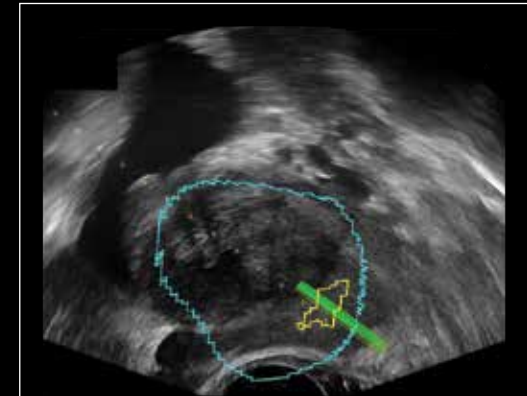
Expanded sector imaging of prostate gland
E14C4t transducer



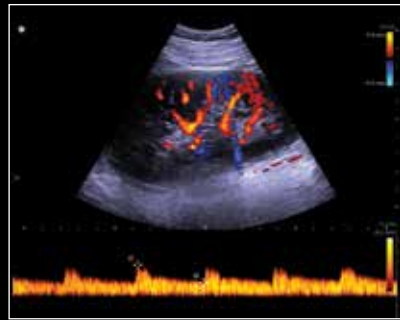
Sagittal plane of heterogeneous prostate gland
E14C4t transducer



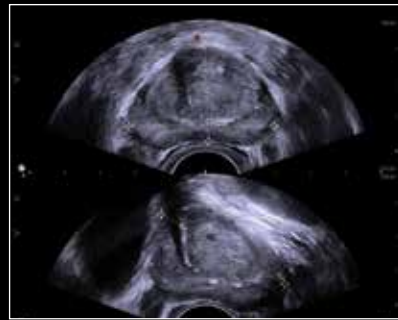
Transverse prostate with left-side lesion
E10C4 transducer



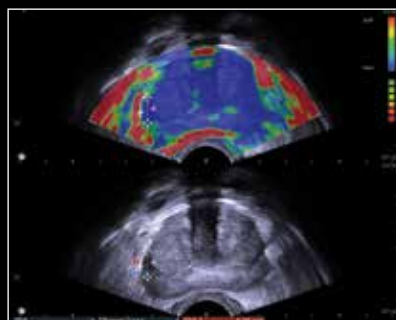
bkFusion
Biopsy of region of interest
E14C4t transducer



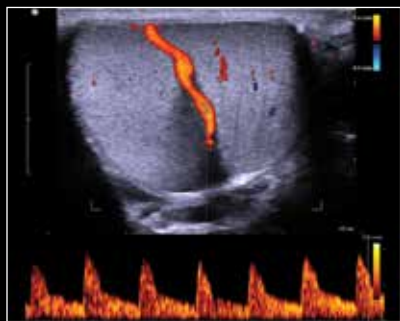
Right kidney resistive index measurement
6C2s transducer



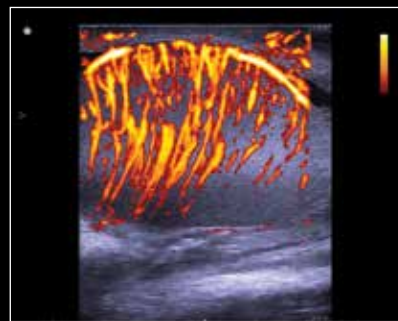
Prostate volume measurement
bipplane imaging
E14C4t transducer



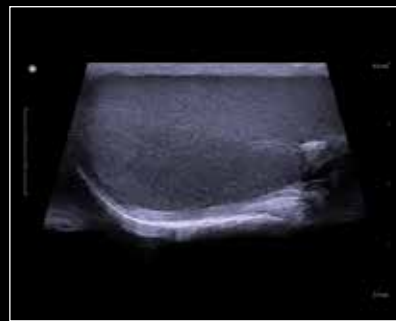
Elastography of the prostate
E14C4t transducer



Testicular artery - PW Doppler
18L5 transducer



Testicular blood flow - power Doppler
13L4w transducer



Testis with extended field-of-view
18L5 transducer

THE RIGHT TRANSDUCERS FOR EVERY NEED

Your patients represent a wide range of body types. The bk3000 features a comprehensive portfolio of specialty transducers¹ for urology and general imaging designed to provide superior access for each and every patient.

A unique Smart™ button enables you to activate the transducer, freeze, print and store images. This exclusive feature performs essential imaging functions quickly and simply while reducing the time to change transducers.

Up to four transducers can be connected to the bk3000 simultaneously. Our transducers are designed to be connected and removed with one hand, using a simple locking mechanism on the system. All our transducers are fully validated for common reprocessing methods.

Prostate Triplane E14C4t	High-Resolution Endfire E13C2	Endfire Curved E14C4	Endocavity Biplane E14CL4b	Endocavity E10C4	Curved 5C1e	Small Curved 6C2s
						
Curved 6C2	Curved 9C2	Linear 8L2	Wide Linear 13L4w	Linear 14L3	High-Frequency Linear 18L5	Small High-Frequency Linear 18L5s
						
Wide Linear 10L2w	Robotic Drop-In X12C4 ²	Anorectal 3D 20R3				
						

¹ E14C4, 9C2, 8L2, 5C1e, 18L5s, E13C2 and 20R3 have not been licensed by Health Canada.

² A system upgrade is required to use X12C4. X12C4 has not been licensed by Health Canada.

bkultrasound.com

BK Ultrasound
8 Centennial Drive
Peabody
MA 01960
USA
T +1 978 326 1300
bkultrasound.com

North America
Sales & Service
BK Ultrasound
8 Centennial Drive
Peabody, MA 01960
USA
T +1 978 326 1300
F +1 978 326 1399
bkultrasound.com

Europe and Rest of World
Sales, Service & Design Center
BK Ultrasound
Mileparken 34
2730 Herlev
Denmark
T +45 4452 8100
F +45 4452 8199
bkultrasound.com

Asia
Sales & Service
Analogic Medical Equipment
(Shanghai) Co., Ltd.
1377, Lan Dian Road
Pu Dong New District
Shanghai
China 201132
T: +86 21 2089 0333
bkultrasound.com


powered by analogic 

 BK Medical Aps, Mileparken 34, 2730 Herlev, Denmark. T +45 4452 8100 F +45 4452 8199

Analogic and the globe logo are registered trademarks of Analogic Corporation.

BG0600-D 07/17